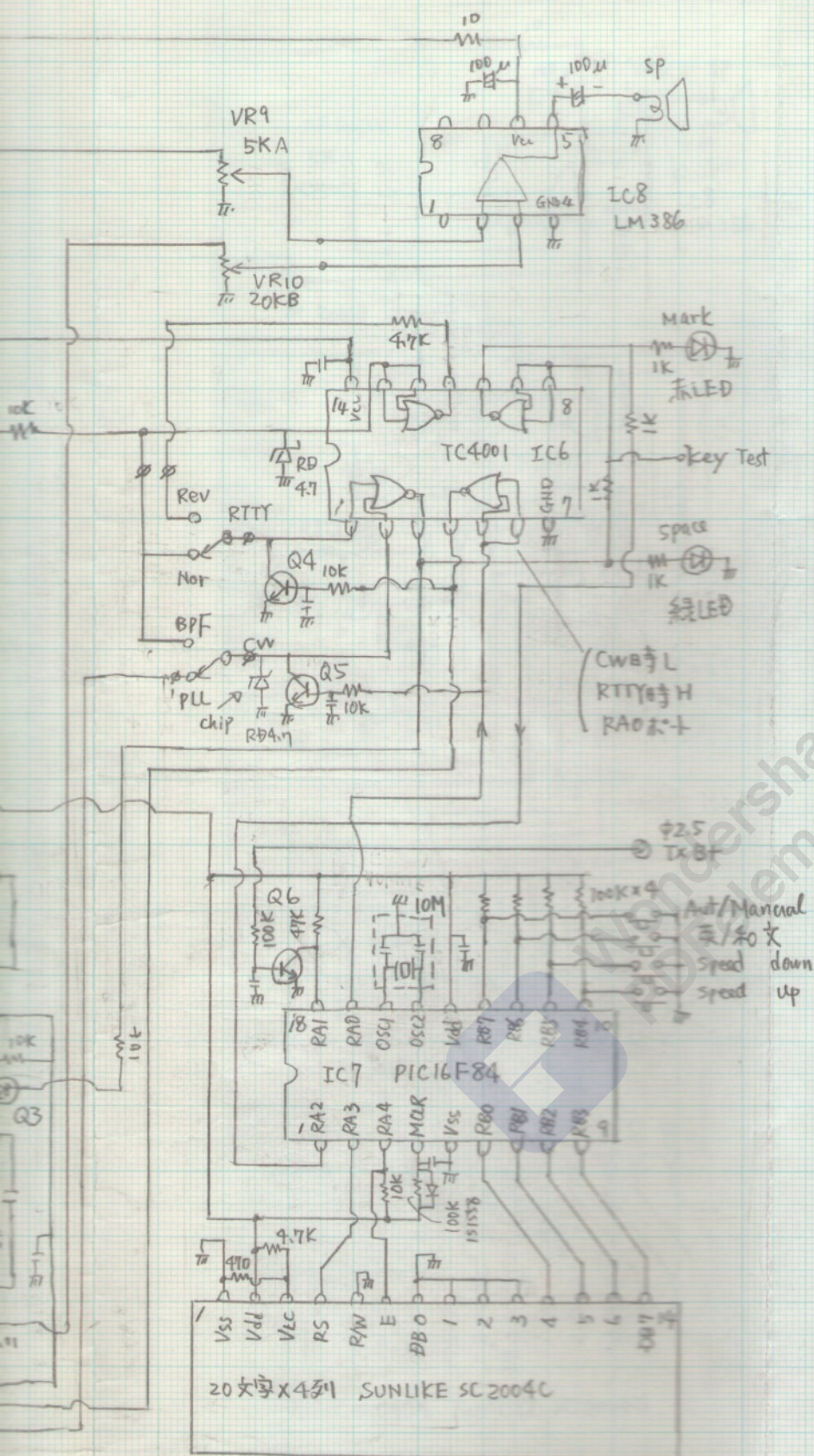


$0.0275$



CW & RTTY 5"-9"



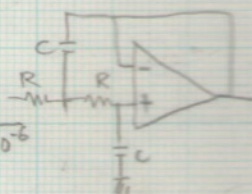
IC5-1 LPF P88

$$f_c = 50 \text{ Hz}$$

$$R = \frac{1}{2\pi f_c C}$$

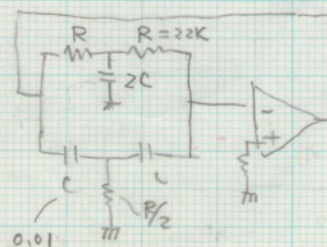
$$= \frac{1}{6.28 \times 50 \times 0.47 \times 10^{-6}}$$

$$= 6.8 \text{ k}\Omega$$



IC5-4 シュミット回路 P46

## Twin T型滤波器



$$f_0 = \frac{1}{2\pi RC} = \frac{1}{6.28 \times 22 \times 10^3 \times 0.01 \times 10^{-6}}$$

$$= 720 \text{ Hz}$$